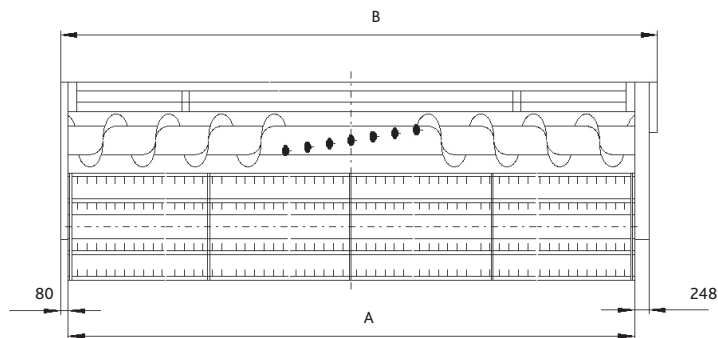


TECHNICAL DATA		COMBINE C5000	
		C5205	C5305
<b>CEREAL HEADER</b>			
Width option		3.60 - 4.20 - 4.80	3.60 - 4.20 - 4.80
Hydraulic cutting height adjustment	mm	-120 / +1380	-120 / +1380
Oil-immersed planetary knife drive gearbox (1220 cuts/min.)		●	●
Long right and left crop dividers, fixed		○	○
No. Of crop lifters (min/max depending on cutting width)		13 / 23	13 / 23
Trailer tow hitch		●	●
Header transport trolley		○	○
Hydraulic multicoupler		○	○
Automatic towing hitch		○	○
Rapeseed header conversion kit with hydraulic controlled side cutter on right		○	○
Side cutter for rapeseed on left with separate hydraulic control (only with rapeseed header)		○	○
Sunflower header conversion kit		○	○
<b>PICK-UP REEL FOR CEREAL HEADERS</b>			
6-bar reel with hydraulic height adjustment		●	●
Hydraulic horizontal adjustment		●	●
Electrical speed control (min / max infinitely variable)	rpm	16 / 45	16 / 45
Automatic adjustment of reel rpm to travel speed		●	●
<b>TRESHING DRUM</b>			
Diameter	mm	600	600
Width	mm	1110	1110
Bars	n°	8	8
Electrical variator	rpm	420 / 1220	420 / 1220
<b>CONCAVE</b>			
Bars	n°	15	15
Wrap angle	degrees	121	121
Separation surfaces	m²	0.72	0.72
Multi-segment concave		○	○
Laterally operated de-awner plates		●	●
Manual adjustment of concave inlet/outlet		●	●
Conversion for maize harvesting, grain or CCMU		○	○

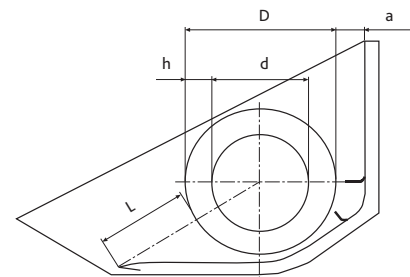
CEREAL HEADERS

Type	A (mm)	B (mm)	Weight (Kg)
3.60 m	3580	3970	1100
4.20 m	4187	4515	1170
4.80 m	4796	5124	1280



CEREAL HEADERS

L (mm)	D (mm)	d (mm)	h (mm)	a (mm)
480	610	350	130	50



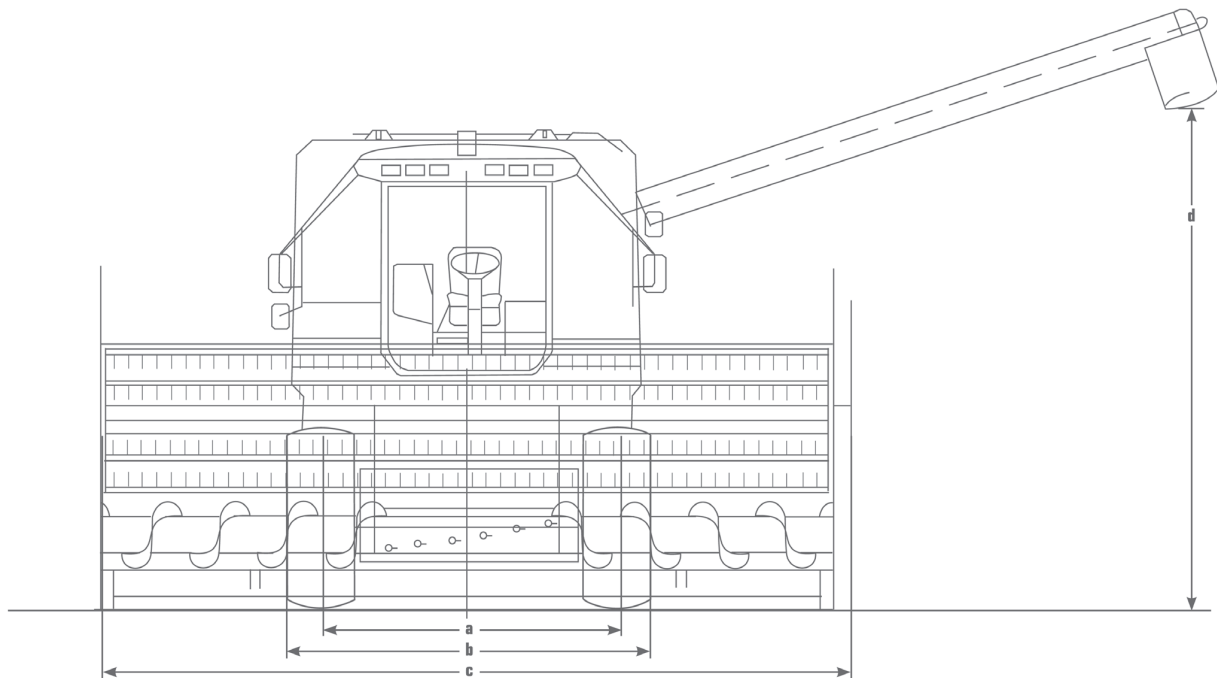
TECHNICAL DATA		COMBINE C5000	
		C5205	C5305
<b>STRAW WALKER</b>			
Elements	n°	5	5
Steps	n°	4	4
Straw walkers closed		●	●
Ball bearing mounts		●	●
Shaking surface area	m²	4.22	4.22
Total separation surface	m²	5.10	5.10
<b>STRAW CHOPPER - CHAFF SPREADER</b>			
Built-in straw chopper with manually adjustable spread width		○	○
Chaff spreader with conveyor integrated in the sieves		○	○
<b>CLEANING SYSTEM</b>			
High performance crossflow fan		●	●
Sieve box illumination		●	●
Opposed action sieves		●	●
Total ventilated sieve area	m²	3.75	3.75
<b>TAILING RETURN SYSTEM</b>			
Independent L/R returns with re-threshing system		●	●
<b>GRAIN TANK</b>			
Lifting / Capacity	litres	4600	4600
Discharge in any position		●	●
Visual and audible grain tank level indicator		●	●
Interior light / Grain sampling from driving position		●	●
Discharge speed	l/sec.	75	75
<b>ENGINE</b>			
DEUTZ Tier 3A 2 valve Common Rail engine (2012)		DEUTZ TDC L6.61 LITRES	DEUTZ TDC L6.61 LITRES
Homologated power (97/68/EC) at rated engine speed	kW/HP	118/160	132/180
Maximum power (ECE R120)	kW/HP	118/160	132/180
Fuel tank	litres	300	300
<b>TRANSMISSION / BRAKES / STEERING</b>			
Hydrostatic transmission with 3-speed gearbox (75 cc)		●	●
Forward speed / Reverse speed	Km/h	0 - 26.0 / 0-14.0	0 - 26.0 / 0-14.0
Pedal operated hydraulic brake, usable as independent brake, mechanical parking brake		●	●
<b>Tyres</b>			
front 23.1-26AS 12 PR		○	○
front 620/75 R26"		○	○
rear 12.5/80-18 impl. 10 PR		○	○
front 18.4-30 AS 12 PR		●	●
rear 11.5/80-15.3 10 PR		●	●
<b>CAB</b>			
CommanderCab EVO with tinted, thermally insulated glass providing panoramic visibility, comfort driving seat with armrest, passenger seat		●	●
CommanderStick with multiple control functions		●	●
CCM (Combine Control Management)		●	●
6 work lights on cab, 1 work light on grain tank, 2 rear work lights		○	○
Workvisibility pack: work lights on sides, under-cab and on handrail		○	○
Heater and air conditioning		●	●

● STD ○ OPT

- Not available

\* Optional or standard depending on version

TECHNICAL DATA			COMBINE C5000	
			C5205	C5305
<b>DIMENSIONS</b>				
a Track width*	front	mm	2270	2270
	rear	mm	2240	2240
b Width* without cutter bar		mm	2870	2870
c Width with cutter bar	with 3.60 m cutter bar	mm	3900	3900
	with 4.20 m cutter bar	mm	4510	4510
	with 4.80 m cutter bar	mm	5120	5120
d Height to lower edge of grain tank discharge pipe with standard tyres			3450	3450
e Distance between side wall of cutter bar and grain discharge pipe	with 3.60 m cutter bar	mm	1950	1950
	with 4.20 m cutter bar	mm	1645	1645
	with 4.80 m cutter bar	mm	1340	1340



## TECHNICAL DATA

## COMBINE C5000

### C5205

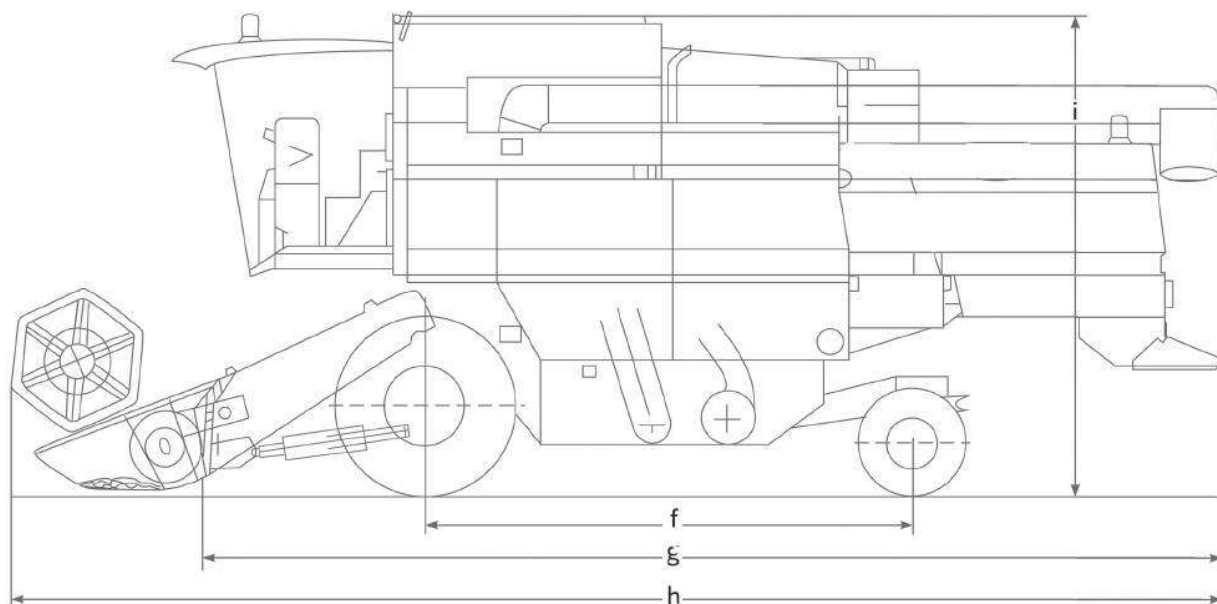
### C5305

### DIMENSIONS IN MM

Parameter	Unit	C5205	C5305
f Wheelbase	mm	3220	3220
g Length without cutter bar	mm	7960	7960
h Length with cutter bar- crop dividers folded in (mm)	mm	10620	10620
i Grain tank height	mm	3720	3720

### WEIGHTS

Configuration	Unit	C5205	C5305
without header	Kg	8050	8050
weight with 3.60 m header	Kg	9150	9150
weight with 4.20 m header	Kg	9220	9220
weight with 4.80 m header	Kg	9330	9330



- STD ○ OPT
- Not available
- \* Optional or standard depending on version

The technical specifications and images herein are purely indicative. DEUTZ-FAHR reserves the right to update this information at any time without notice.